

Alto

Some Children See Him

Music by Alfred Burt
Lyrics by Wihla Hutson
Arranged by Duane Day

Slowly, Tenderly



Some chil-dren see Him lil - y — white, the



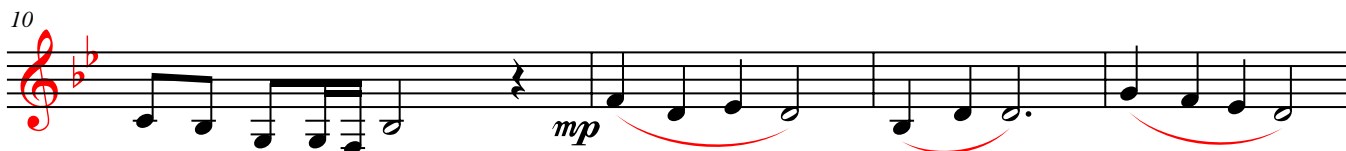
Ba - by Je - sus born this night, Some chil-dren see Him lil - y — white, with



tress-es soft and — fair Some chil-dren see Him — bronzed and brown, The



Lord of Heav'n to — earth come down; Some chil-dren see Him bronzed and — brown, with



dark and heav - y — hair Ooh — Ooh — Ooh —

14

Ooh _____ Ah _____ Ah _____ Ooh _____ Ooh _____ The

mf

Detailed description: This block contains the first line of music, measures 14 through 18. It is written in a treble clef with a key signature of two flats (B-flat and E-flat). The melody consists of quarter and eighth notes, with some notes beamed together. There are red underlines under the lyrics 'Ooh', 'Ah', 'Ah', 'Ooh', and 'Ooh'. The word 'The' is at the end of the line. A dynamic marking of *mf* is placed above the final note.

19

chil-dren in each dif-f'rent place _____ will see the Ba-by Je-sus' face like

Detailed description: This block contains the second line of music, measures 19 and 20. The melody continues with quarter and eighth notes. A red underline is under the word 'place'. The lyrics 'will see the Ba-by Je-sus' face like' follow.

21

theirs, but bright with heav'n-ly grace, _____ and filled with ho-ly light _____ O

Detailed description: This block contains the third line of music, measures 21 and 22. The melody continues with quarter and eighth notes. Red underlines are under the words 'grace,' and 'light'. The lyrics 'theirs, but bright with heav'n-ly grace, and filled with ho-ly light O' follow.

23

lay a - side each earth-ly thing and with thy heart as _____ of - fer - ing Come

Detailed description: This block contains the fourth line of music, measures 23 and 24. The melody continues with quarter and eighth notes. Red underlines are under the words 'lay a - side each earth-ly thing' and 'of - fer - ing'. The lyrics 'lay a - side each earth-ly thing and with thy heart as of - fer - ing Come' follow.

25

wor-ship now the In - fant King, *p* 'Tis love that's born to-night! 'Tis

Detailed description: This block contains the fifth line of music, measures 25 and 26. The melody continues with quarter and eighth notes. Red underlines are under the words 'wor-ship now the In - fant King,' and 'love that's born to-night!'. A dynamic marking of *p* is placed above the word 'Tis'. The lyrics 'wor-ship now the In - fant King, 'Tis love that's born to-night! 'Tis' follow.

27

love that's born to - night! *f*

Detailed description: This block contains the sixth line of music, measures 27 and 28. The melody continues with quarter and eighth notes. Red underlines are under the words 'love that's born to - night!'. A dynamic marking of *f* is placed at the end of the line. The lyrics 'love that's born to - night!' follow.